



Something For Everyone.
Training Makes It Work.



St. Petersburg
727.893.2500

PINELLAS TECHNICAL COLLEGE



Getting started *is Easy.*



Take the State
Literacy Test or
provide a Qualifying
Exemption



Apply for
Financial
Aid



Meet with a
School Counselor
and a Financial Aid
Advisor

Terms typically start in August, October, January, March, & May.

FINANCIAL AID Application Steps and Resources

Financial aid to help cover the cost of a Pinellas Technical College education is available to those who qualify. This aid includes Federal and State Grants, and Scholarships.

- Complete the FAFSA application at www.fafsa.gov
Federal School Codes:
013917 (St. Petersburg Campus)
- Veterans, and other eligible students, may use their Veterans (VA) benefits, including the Montgomery GI Bill and Post 9/11 Bill
- Other Sources include Florida Prepaid and the Florida Bright Futures Scholarship

MISSION

“Provide students the opportunity to develop national workplace competencies to fill the needs of business and industry.”

VISION

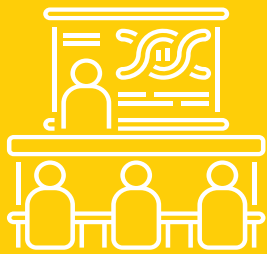
“To be our communities’ first choice for workforce education.”



MORE INFORMATION:

St. Petersburg | 727.893.2500

Mon – Thu 7:00 am – 9:00 pm | Fri 7:00 am – 4:00 pm



Programs

For specific admission requirements and course content, refer to www.myptc.edu. Certificate of Completion is awarded when state requirements are met for program.

■ ARTS & AUDIO/VISUAL

Television Production Technology

SP

Prepare for employment in the digital video production industry as an audio/ video equipment technician, video/television camera operator, video editor, multimedia artist or broadcast technician.

Length: 1200 hrs (approx 12 mos)

Tuition: \$3,504 Other: \$1,110 (bks, equip & fees; estimate)

■ AUTOMOTIVE & TRANSPORTATION

Automotive Collision Technology Technician

SP

Courses cover estimating and evaluating body damage, inspection, measuring, repairing of outer vehicle body parts, application of paints, and preparation of vehicles and related components for repair and refinishing.

Length: 1400 hrs (approx 14 mos)

Tuition: \$4,088 Other: \$3,943 (bks, equip & fees; estimate)

Master Automotive Service Technology 1

SP

Obtain the skills of an entry-level technician in the automotive industry through hands-on practical experience in maintaining, troubleshooting, replacing and repairing brake systems, steering & suspension, electrical systems and engine repair.

Length: 1050 hrs (approx 11 mos)

Tuition: \$3,066 Other: \$7,299 (bks, equip & fees; estimate)

Master Automotive Service Technology 2

SP

Obtain the skills of an entry-level technician in the automotive industry through hands-on practical experience in engine performance, automatic and manual transmissions and automotive HVAC. Students must complete Automotive Service Technology 1 or demonstrate mastery of the program outcomes prior to enrollment in Automotive Service Technology 2.

Length: 750 hrs (approx 8 mos)

Tuition: \$2,190 Other: \$1,941 (bks, equip & fees; estimate)

Commercial Class B Driving

SP

The mission of this program is to prepare students for employment as Florida Class B Licensed truck drivers.

Length: 150 hrs (approx 1.5 mos)

Tuition: \$438 Other: \$629 (bks, equip & fees; estimate)*

Commercial Vehicle Driving

SP

Learn the skills to become a Class A licensed tractor trailer truck driver with emphasis on D.O.T. regulations, cargo handling, trip planning, and vehicle inspection and operations regulations.

Length: 320 hrs (approx 3 mos)

Tuition: \$935 Other: \$2,397 (bks, equip & fees; estimate)*

■ BEAUTY

Barbering

SP

This program is designed to prepare students for a master Barber license. The curriculum includes theoretical instruction and hands-on practical training. Students will gain experience in a variety of barbering techniques, such as using clippers, shears, clipper over comb, shears over fingers, shampooing, facials, beard trimming, as well as color and chemical services.

Length: 900 hrs (approx 10.5 mos)

Tuition: \$2,628 Other: \$3,114 (bks, equip & fees; estimate)

Cosmetology

SP

Become a licensed cosmetologist. Learn about shampoos, rinses, scalp treatments, hair styling, hair cutting, facials, manicures and salon management.

Length: 1200 hrs (approx 15 mos)

Tuition: \$3,504 Other: \$2,534 (bks, equip & fees; estimate)

Facials Specialty

SP

Program content includes communication, leadership, professional ethics, legal responsibilities, employability skills, safe and efficient work practices, Florida cosmetology law and rules, and the development of skills in performing the techniques required in the practice of a facials specialist.

Length: 220 hrs (approx 3 mos)

Tuition: \$642 Other: \$1,300 (bks, equip & fees; estimate)*

Nails Specialty

SP

The content includes communication, leadership, human relations and employability skills; safe and efficient work practices; Florida cosmetology law and rules; acquisition of knowledge of the nails specialist and the related chemistry; bacteriology, anatomy and physiology; and development of skills in performing the techniques required in the practice of nails specialist occupations.

Length: 180 hrs (approx 2 mos)

Tuition: \$526 Other: \$1,289 (bks, equip & fees; estimate)*

■ BUSINESS & INFORMATION TECHNOLOGY

Computer Systems and Information Technology

SP

In this course, students learn about computer hardware, software, networking protocols, basic routing concepts, and cybersecurity. Additionally, they prepare for the A+, Network+, and Security+ certification exams.

Length: 900 hrs (approx 9 mos)

Tuition: \$2,628 Other: \$1,670 (bks, equip & fees; estimate)

Computer Systems & Information Technology (CSIT)-IET

CLV

In this course, students learn about computer hardware, software, networking protocols, basic routing concepts, and cybersecurity. Additionally, they prepare for the A+, Network+, and Security+ certification exams.

Length: 900 hrs (approx 9 mos)

Tuition: \$2,628 Other: \$1,670 (bks, equip & fees; estimate)

*Ineligible for Federal financial aid.

■ CHILD CARE

Child Care Center Operations

SP

Learn how to operate a day care center by developing competencies required for the Florida Child Care and Education Program Director Credential.

Length: 45 hrs

Tuition: \$132 Other: \$129* (bks, equip & fees; estimate)

Early Childhood Education

SP

Students will learn following elements of the early childhood education industry: planning, management, finance, technical and production skills; underlying principles of technology; labor, community, health, safety, and environmental issues; and developmentally appropriate practices for children birth through age eight.

Length: 600 hrs. (approx. 6 mos)

Tuition: \$1,752 Other: \$435 (bks, equip & fees estimate)

School Age Professional Certificate

SP

Students will understand and demonstrate the following elements of the child care industry: physical and intellectual competence, family involvement, developmentally appropriate practices for school age children and program management.

Length: 120 hrs (Approximately 6 months, 80 hours of instruction, 40 hours independent) Tuition: \$234 Other: \$40* (bks, equip & fees; estimate)

Tuition: \$234 Other: \$40* (bks, equip & fees; estimate)

■ CONSTRUCTION & DESIGN

Computer-Aided Drawing and Modeling

SP

This program offers rigorous content and relevant technical knowledge and skills needed to prepare for careers in the Architecture and Construction career cluster. Content includes the use of software to convert the engineering or architectural designs into technical drawings. Students can specialize in architectural, civil, or mechanical drafting and use technical drawings to design everything from microchips to skyscrapers.

Length: 1200 hrs (approx 12 mos)

Tuition: \$3,504 Other: \$1,665 (bks, equip & fees; estimate)

Electricity

SP

Prepare for employment as an electrician. Content includes basic safety and code, circuits, diagramming, all phases of residential wiring circuits and installation, pipe bending, transformers, motor controls, and data and fiber cabling.

Length: 1200 hrs (approx 12 mos)

Tuition: \$3,504 Other: \$2,262 (bks, equip & fees; estimate)

Heating, Ventilation, Air-Conditioning/Refrigeration (HVAC/R)1

SP

Obtain the skills that stress the understanding of the heating, air-conditioning, refrigeration and ventilation industry and demonstrate elements of the industry such as planning, management, finance, technical and production skills, the underlying principles of technology, and health, safety and environmental issues.

Length: 750 hrs (approx 8 mos)

Tuition: \$2,190 Other: \$1,511 (bks, equip & fees; estimate)

Plumbing

SP

Prepare for employment in the plumbing industry as a plumber's helper, or residential or commercial plumber through hands-on learning and application.

Length: 1080 hrs (approx 11 mos)

Tuition: \$3,154 Other: \$1,920 (bks, equip & fees; estimate)

■ HEALTH SCIENCE

Dental Assisting

SP

Train to be the dentist's "Right-hand Person" through the study of basic dental office procedures, dental terminology, patient information and assessment, oral health, preventive dentistry, dental materials and dental laboratory skills.

Length: 1230 hrs (approx 13 mos)

Tuition: \$3,592 Other: \$2,612 (bks, equip & fees; estimate)

Emergency Medical Technician

SP

Introduction to knowledge, skills, and attitudes required in emergency medical and trauma situations. Prepares student to successfully pass the National Registry of Emergency Medical Technicians (NREMT) Emergency Medical Technician (EMT) certification exam.

Length: 300 hrs (approx 4 mos)

Tuition: \$876 Other: \$801 (bks, equip & fees; estimate)

Medical Coder/Biller

SP

Learn medical terminology, use of ICD and CPT coding systems, and an understanding of medical billing.

Length: 1110 hrs (approx 12 mos)

Tuition: \$3,242 Other: \$1,931 (bks, equip & fees; estimate)

Phlebotomy - IET

CLV

This class is designed to prepare students to become a professional phlebotomist, primarily drawing blood. After completion of the program a student may sit for the American Medical Technologist's exam to become a Registered Phlebotomy Technician (RPT).

Length: 165 hrs (approx 4 mos)

Tuition: \$481.80 Other: \$564* (bks, equip & fees; estimate)

Practical Nursing

SP

Train in the administration of treatments and medication in the care of the ill while gaining the skills and knowledge to successfully pass the State Licensing Exam and become a Licensed Practical Nurse.

Length: 1350 hrs (approx 15 mos)

Tuition: \$3,942 Other: \$3,586 (bks, equip & fees; estimate)

Surgical Technology

SP

Combine the knowledge of human anatomy, instrumentation and surgical patient care to facilitate the surgeon's performance of invasive and diagnostic procedures.

Length: 1330 hrs (approx 14 mos)

Tuition: \$3,884 Other: \$1,775 (bks, equip & fees; estimate)

■ HOSPITALITY

Professional Culinary Arts & Hospitality

SP

Prepare for a variety of positions in the culinary industry including dining room operations, beverage management, steward, utility cook, breakfast cook, line cook, and pastry baker.

Length: 1200 hrs (approx 12 mos) Tuition: \$3,504 Other: \$3,250 (bks, equip & fees; estimate)

■ MANUFACTURING

Jewelry Design and Repair 1

SP

Prepares for employment as a Jeweler and Precious Stone and Metal Worker. Laboratory activities include instruction in the use of equipment, tools, and materials and processes found in the jewelry industry.

Length: 900 hrs (approx 9 mos) Tuition: \$2,628 Other: \$1,254 (bks, equip & fees; estimate)

Jewelry Design and Repair 2

SP

Focuses on broad, transferable skills and stresses understanding and demonstration of the following elements of the Jewelry Repair industry; planning, management, finance, technical and product skills, and health, safety, and environmental issues.

Length: 750 hrs (approx 8 mos) Tuition: \$2,190 Other: \$583 (bks, equip & fees; estimate)

Welding Technology

SP

Prepare students for certification and employment as a welder in the fabrication and repair industry, as well as the construction industry, using Shielded Metal Arc Welding (stick), Gas Tungsten Arc Welding (TIG), Gas Metal Arc Welding (MIG), Flux-Core Arc Welding (FCAW) using varies thickness and materials.

Length: 1050 hrs (approx 11 mos) Tuition: \$3,066 Other: \$2,764 (bks, equip & fees; estimate)

Welding Technology – Advanced

SP

Prepare for certification and employment as an advanced welder in emerging welding industries, using Shielded Metal Arc Welding (SMAW), pipe fitting fabrication techniques, and advanced Gas Tungsten Arc Welding (GTAW) skills.

Length: 750 hrs (approx 8 mos) Tuition: \$2,190 Other: \$2,523 (bks, equip & fees; estimate)

■ PUBLIC WORKS

Public Works

SP

Prepare for employment in wastewater systems, plant operations and park maintenance. Content includes the opportunity to attain a Class B driver's license.

Length: 450 hrs (approx 5 mos) Tuition: \$1,314 Other: \$622 (bks, equip & fees; estimate)*



SP

**Pinellas Technical College –
St. Petersburg Campus**

901 34th St. S

St. Petersburg, FL 33711

727.893.2500

CLV

**Pinellas Technical College –
St. Petersburg Campus
Clearview Adult Education Center**

3815 43rd St. N

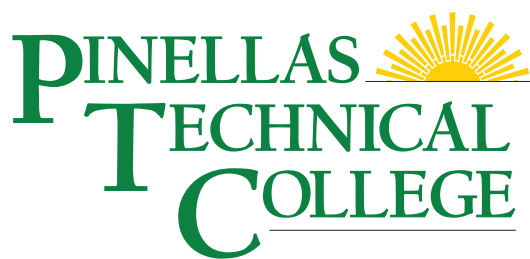
St. Petersburg, FL 33714

727.221.5395

OPPORTUNITY

Starts Here.

myptc.edu



**St. Petersburg
Campus**

901 34th St S,
St. Petersburg, FL 33711
727.893.2500

Since 1962...

Pinellas Technical College's emphasis is on post-secondary education, focusing on over 40 exciting career areas and nearly 60 programs.

Pinellas Technical College also offers continuing education courses, life enrichment courses, and commercial training services through the Office of Workforce Innovation.

The Pinellas Technical College experience is rich with relevant, stimulating, and challenging career and technical education. Our network of more than 250 business and industry partners serve as advisors for our programs, ensuring they are preparing students for the needs of the current and future work force.

Each campus is individually accredited by the Council on Occupational Education and the Southern Association of Colleges

and Schools. Pinellas Technical

College is an alliance member of the Commission of International and Trans-Regional Accreditation. Most Pinellas Technical College programs are also individually accredited or approved by one or more professional accrediting bodies and licensing and certification agencies.

PTC has been a leader in providing career and technical education via distance learning. Through first-class training and support from our highly skilled faculty and staff, graduates are prepared to compete in a global job market.

We are committed to providing quality educational opportunities to meet our students' needs and the needs of business and industry. Employers throughout the Tampa Bay area recognize our Pinellas Technical College graduates as having the qualities, skills, and knowledge necessary for success on the job now and in the future.

*Offering students
first-rate career
and technical
education on both
our Clearwater
and St. Petersburg
campuses.*



Pinellas County Schools | www.pcsb.org | *The School Board of Pinellas County, Florida prohibits any and all forms of discrimination and harassment based on race, color, sex, religion, national origin, marital status, age, sexual orientation, or disability in any of its programs, services, or activities.*



ACCREDITATION:

Council on Occupational Education | www.council.org
7840 Roswell Road, Building 300, Suite 325
Atlanta, GA 30350 | 770.396.3898 | 1.800.917.2081

Cognia Global Commission | www.cognia.org
9115 Westside Parkway, Alpharetta, GA 30009
1.888.413.3669 (US) | 1.678.392.2285 (Intl)